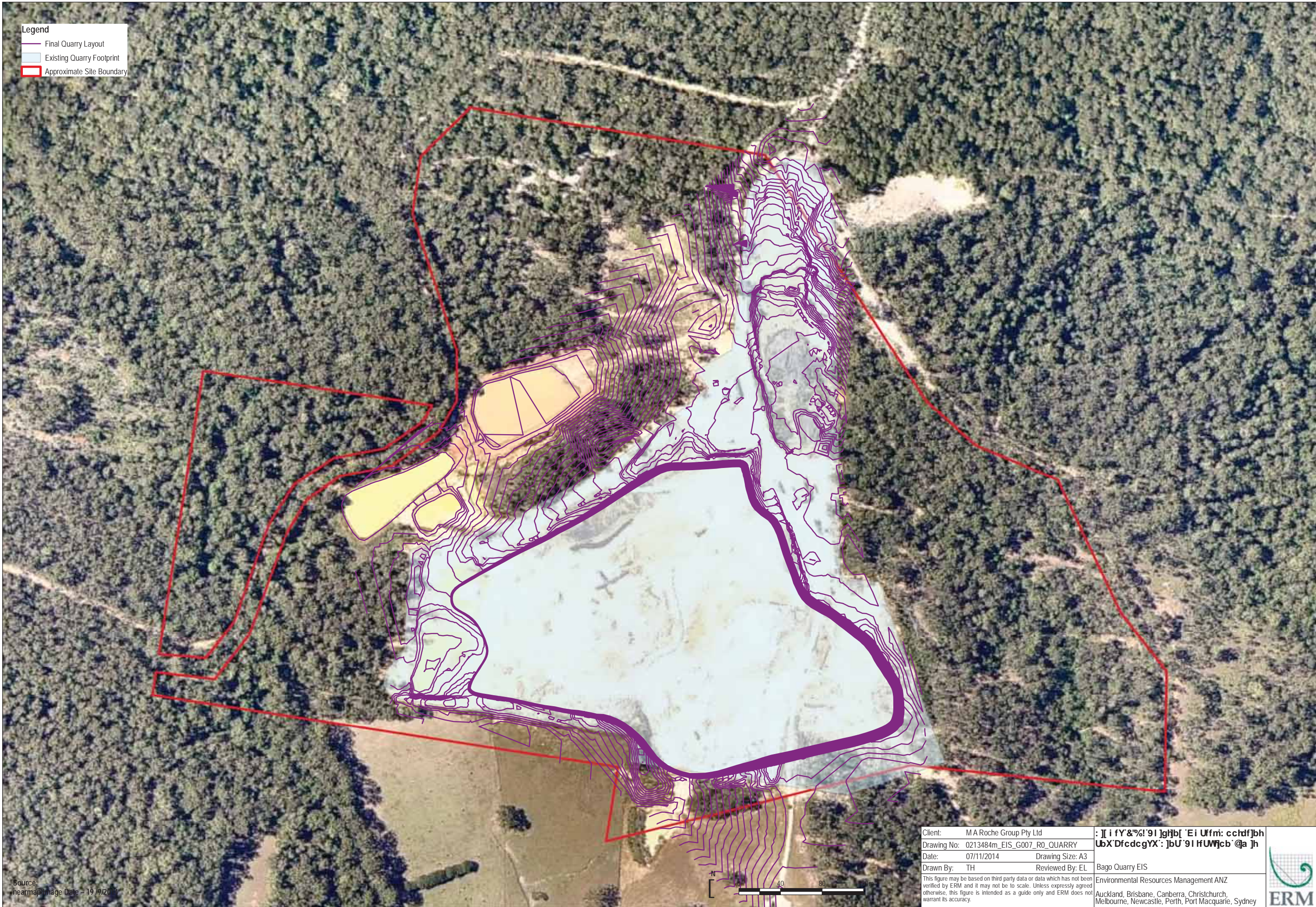



Legend

- Final Quarry Layout
- Existing Quarry Footprint
- Approximate Site Boundary



Source:
nearmap Image Date - 19/9/2014

Client:	M A Roche Group Pty Ltd	: [i fY'&%!'9l]ghb['Ei Uffm: cctdf]bh
Drawing No:	0213484m_EIS_G007_R0_QUARRY	UbX'DfcdcgYX':]bU'9l fUW]cb'@a]h
Date:	07/11/2014	Drawing Size: A3
Drawn By:	TH	Reviewed By: EL
This figure may be based on third party data or data which has not been verified by ERM and it may not be to scale. Unless expressly agreed otherwise, this figure is intended as a guide only and ERM does not warrant its accuracy.		Bago Quarry EIS
		Environmental Resources Management ANZ
		Auckland, Brisbane, Canberra, Christchurch, Melbourne, Newcastle, Perth, Port Macquarie, Sydney
		

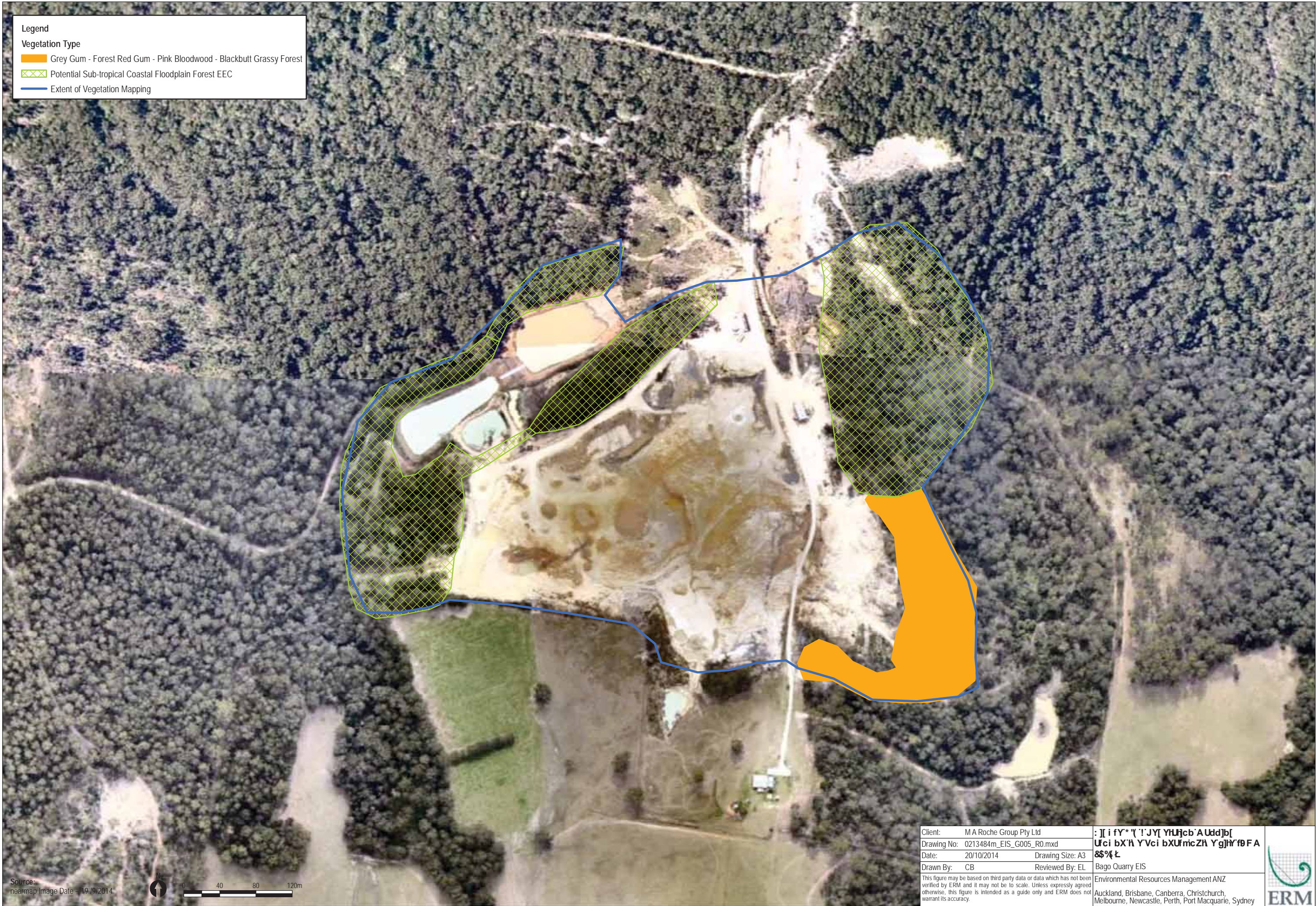
Legend

Vegetation Type

Grey Gum - Forest Red Gum - Pink Bloodwood - Blackbutt Grassy Forest


Potential Sub-tropical Coastal Floodplain Forest EEC

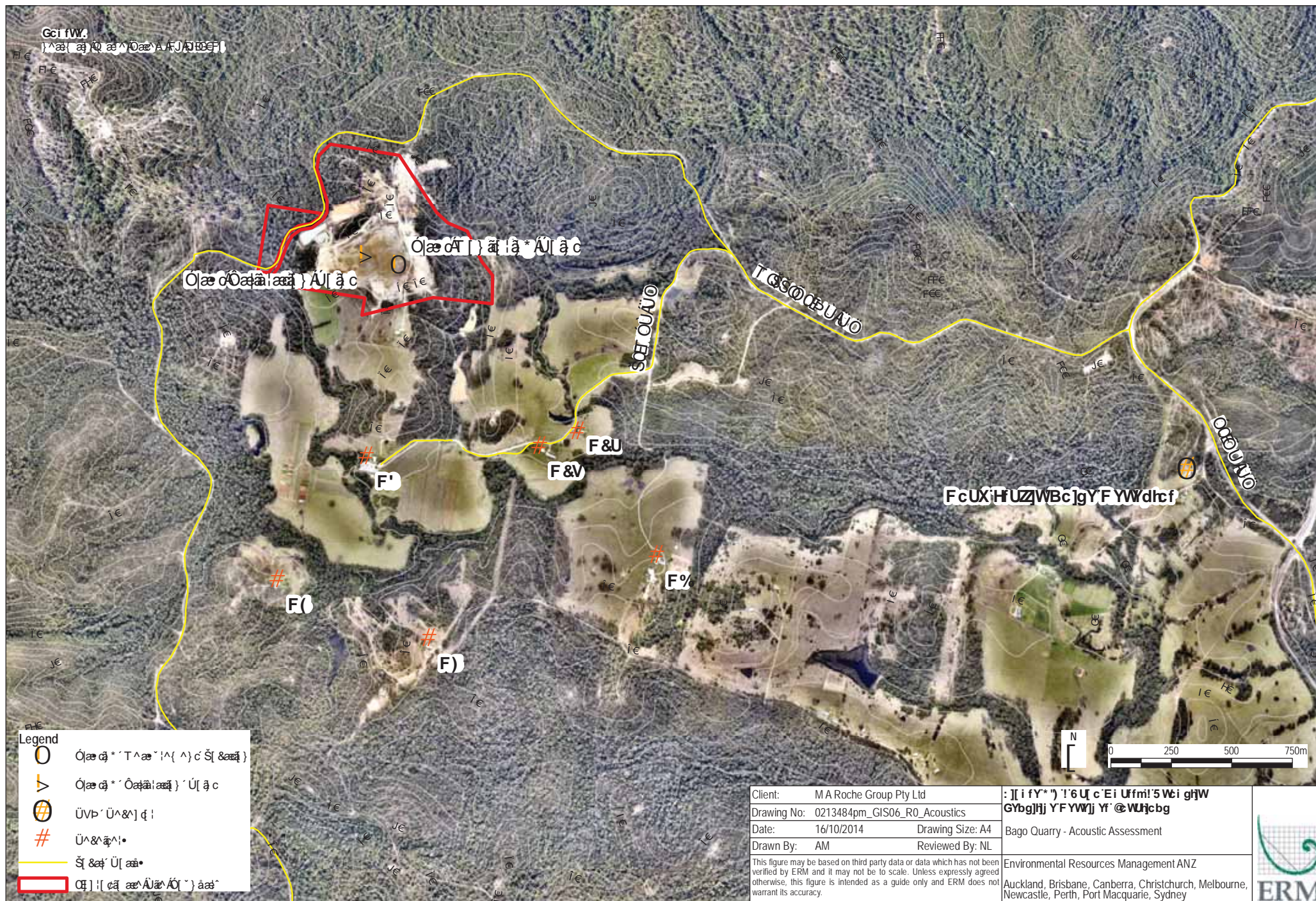
Extent of Vegetation Mapping

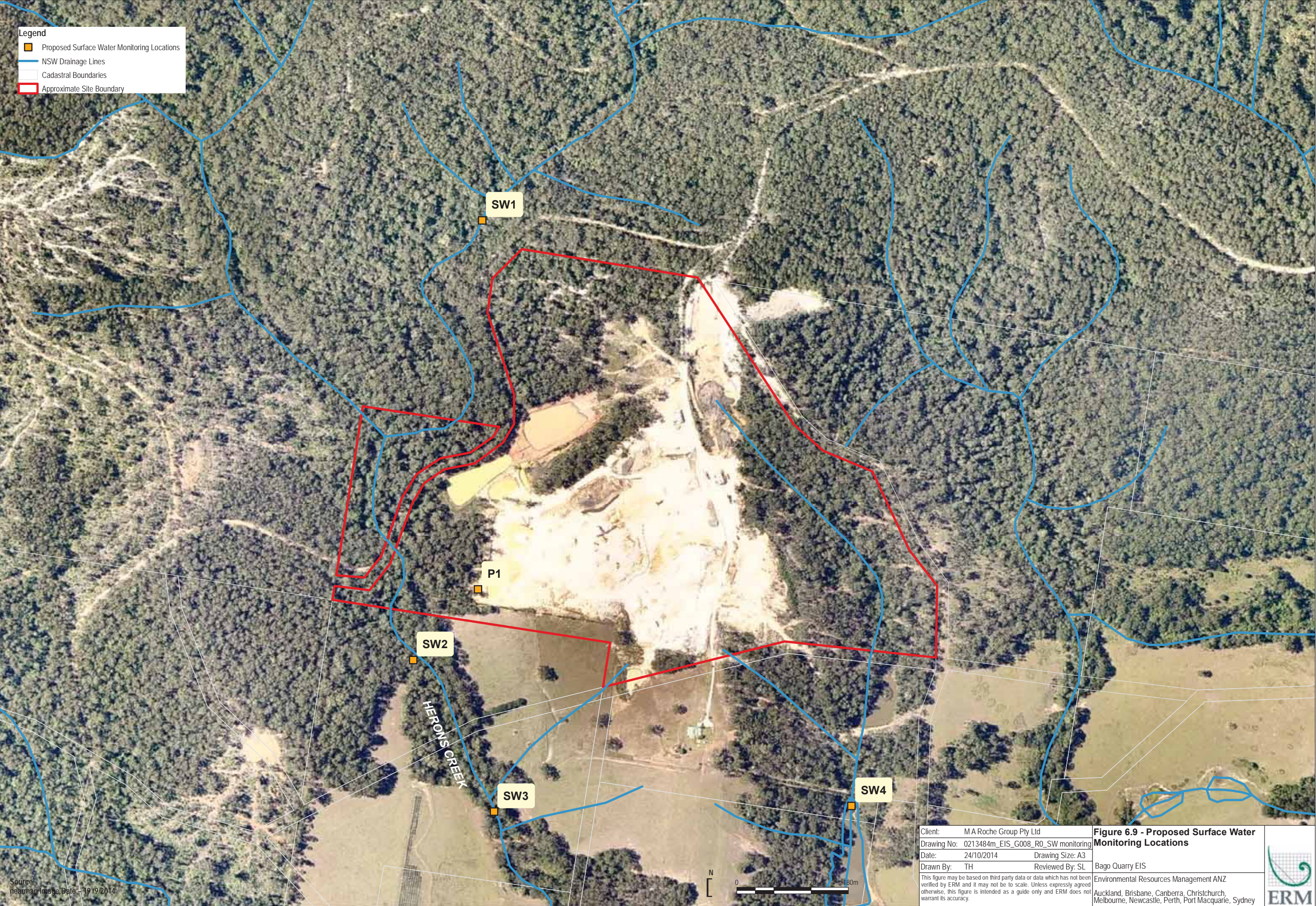


Source:
nearmap Image Date = 19/9/2014



Client:	M A Roche Group Pty Ltd	: [i fY**(' 'T'JY[YH]cb'A Udd]b[
Drawing No:	0213484m_EIS_G005_R0.mxd	Urci bX'H YVci bXUrmicZH Yg]h'f9FA
Date:	20/10/2014	8\$% L
Drawn By:	CB	Reviewed By: EL
This figure may be based on third party data or data which has not been verified by ERM and it may not be to scale. Unless expressly agreed otherwise, this figure is intended as a guide only and ERM does not warrant its accuracy.		Bago Quarry EIS
		Environmental Resources Management ANZ
		Auckland, Brisbane, Canberra, Christchurch, Melbourne, Newcastle, Perth, Port Macquarie, Sydney
		



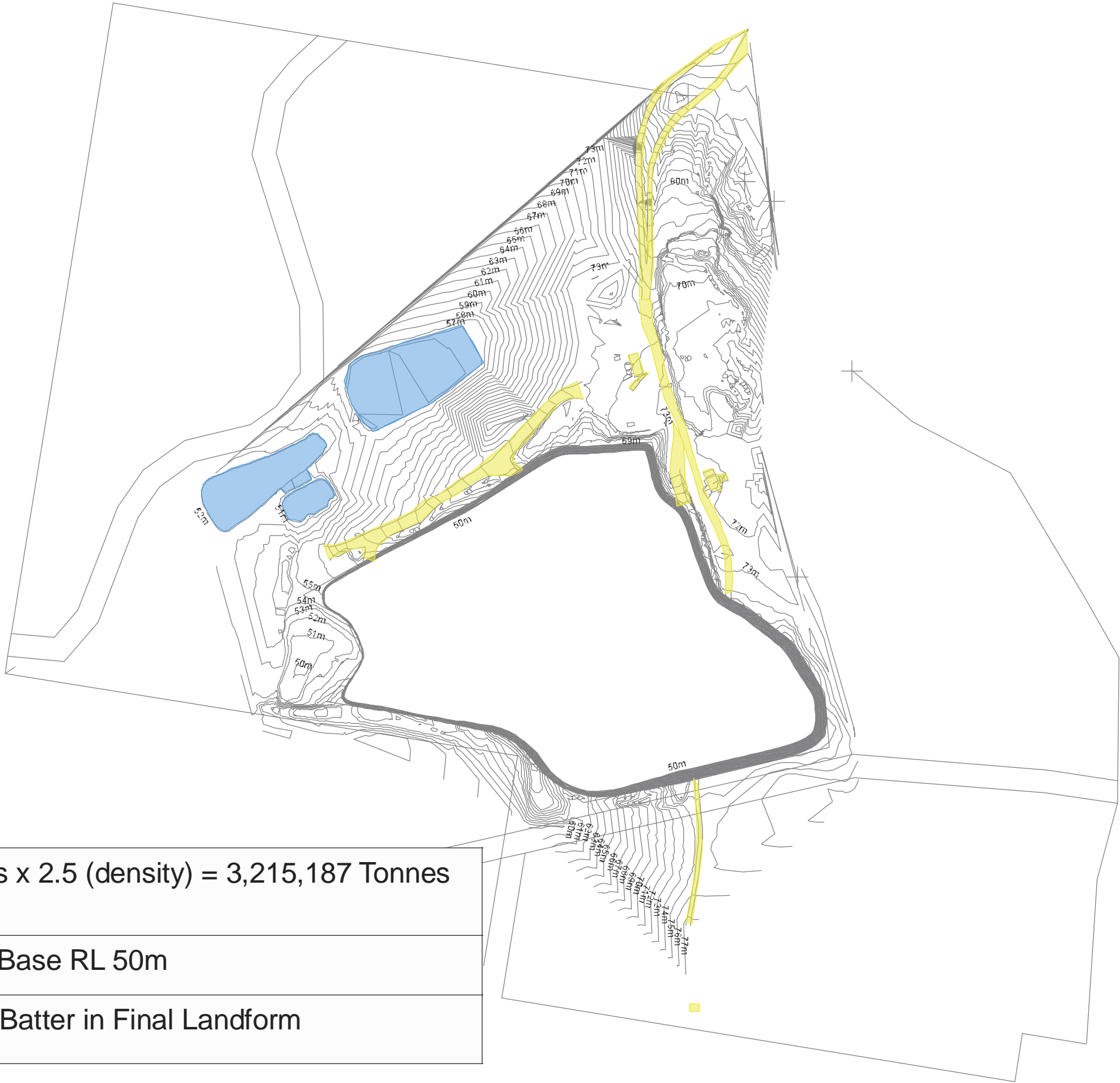


Plan of:	Bago Quarry Existing Site	Location:	Bago, Port Macquarie	Source:	Volcanic Resources Pty Ltd	Our Ref:	V:\Jobs_Bago Quarry\Fig 2
Figure:	TWC	Council:	Port Macquarie- Hasting Council	Survey:		Plan By:	TO
Sheet:	1 of 1	Tenures:	N/A	Projection:	MGA	Project Manager:	GVT
Version/Date:	A 180/06/2014	Client:	Volcanic Resources Pty Ltd	Contour Interval:	1 metre	Office:	Thornton

Scale:



Plan of:	Bago Quarry Proposed Extraction	Location:	Bago, Port Macquarie	Source:	Volcanic Resources Pty Ltd	Our Ref:	V:\Jobs_Bago Quarry\Fig 2
Figure:	THREE	Council:	Port Macquarie- Hasting Council	Survey:		Plan By:	TO
Sheet:	1 of 1	Tenures:	N/A	Projection:	MGA	Project Manager:	GVT
Version/Date:	A 23/06/2014	Client:	Volcanic Resources Pty Ltd	Contour Interval:	1 metre	Office:	Thornton



1,286,075 cubic metres x 2.5 (density) = 3,215,187 Tonnes

Base RL 50m

Single 70° Batter in Final Landform